

TRAFFIC MANAGEMENT NOTES

GENERAL

1. ALL TRAFFIC MANAGEMENT AND WORK ZONE TRAFFIC CONTROL MEASURES SHALL CONFORM TO THE MANUAL ON UNIFORM TRAFFIC CONTROL DEVICES (M.U.T.C.D.), 2003 EDITION, THE STANDARD SPECIFICATIONS, AND THE FOLLOWING NOTES.
2. THE TRAFFIC MANAGEMENT PLANS CONTAINED HEREIN ARE GIVEN AS A GUIDE FOR TYPICAL WORK ZONE TRAFFIC CONTROL APPLICATIONS FOR THE TYPES OF WORK ANTICIPATED FOR THIS PROJECT. THEY ARE NOT INTENDED TO COVER ALL POSSIBLE CONSTRUCTION OPERATIONS WHICH THE CONTRACTOR MAY CHOOSE TO EMPLOY. WORK ZONE TRAFFIC CONTROL FOR OTHER CONSTRUCTION OPERATIONS OR OTHER TRAFFIC SITUATIONS IF APPLICABLE SHALL BE IN ACCORDANCE WITH THE M.U.T.C.D. AND AS APPROVED OR DIRECTED BY THE ENGINEER.
3. LANE RESTRICTIONS MAY NOT REMAIN OVERNIGHT OR DURING NON-WORKING HOURS. AFTER EACH WORKING DAY, TRAFFIC CONTROL DEVICES THAT ARE NOT REQUIRED SHALL BE MOVED OFF THE ROADWAY OR FULL DEPTH CONSTRUCTION AREA AND PLACED SO AS NOT TO IMPEDE PEDESTRIAN AREAS, ABUTTER ACCESS OR CAUSE CONFUSION TO MOTORISTS. IN CERTAIN CIRCUMSTANCES, AND ONLY WITH THE APPROVAL OF MASSDOT AND THE ENGINEER, CAN LANE RESTRICTIONS REMAIN OVERNIGHT.
4. CONTRACTOR SHALL PROVIDE A SAFE TEMPORARY PEDESTRIAN ACCESS WHERE EXISTING SIDEWALKS OR OTHER PEDESTRIAN AREAS ARE AFFECTED BY CONSTRUCTION WORK. MAINTAIN ABUTTER ACCESS AT ALL TIMES EXCEPT FOR SHORT PERIODS APPROVED BY THE ENGINEER.
5. PLACE ALL CONSTRUCTION SIGNING, TRAFFIC CONTROL DEVICES AND TEMPORARY PAVEMENT MARKINGS FOR EACH PHASE PRIOR TO COMMENCEMENT OF CONSTRUCTION.
6. ONE (1) THRU TRAVEL LANE HAVING A MINIMUM WIDTH OF 11'-0" SHALL BE PROVIDED FOR BOTH DIRECTIONS DURING ALL PHASES OF CONSTRUCTION AS SHOWN ON THE TRAFFIC MANAGEMENT PLANS, UNLESS OTHERWISE DIRECTED BY THE ENGINEER.
7. WHEN WORK INFRINGES UPON THE TRAVELED WAY, WORK SHALL BE RESTRICTED TO OFF-PEAK HOURS ONLY. (NORMALLY 9:00am TO 4:00pm, MONDAY TO FRIDAY)
8. TAPER LENGTH FORMULAE FOR CHANNELIZATION DEVICES:
 - L = SAW FOR SPEED EQUAL TO OR GREATER THAN 45 M.P.H.
 - L = WS/60 FOR SPEED EQUAL TO OR LESS THAN 40 M.P.H.
 - WHERE: L = MIN. LENGTH OF TAPER, S = POSTED SPEED, W = OFFSET WIDTH.
9. USE OF ADVISORY SPEED LIMITS SHALL BE AT THE DISCRETION OF THE ENGINEER. W13-1 PLATES SHALL BE USED WHERE APPROPRIATE.
10. FLASHING ARROW PANEL MAY BE USED AND SHALL BE SET IN "ARROW MODE" WHEN USED FOR ACTUAL LANE CLOSURES ONLY. FOR SHOULDER CLOSURES, BULBS TO BE ILLUMINATED IN A NON-DIRECTIONAL. CAUTION CONFIGURATION TO AVOID UNNECESSARY LANE SHIFTS.
11. DISTANCES SHOWN ON THE TRAFFIC MANAGEMENT PLANS ARE A GUIDE ONLY, AND MAY BE ADJUSTED IN THE FIELD BY THE ENGINEER.

CONSTRUCTION SIGNING

12. THE FIRST CONSTRUCTION SIGN IN A SERIES ON EACH APPROACH TO THE PROJECT SHALL BE FLUORESCENT ORANGE HIGH INTENSITY SHEETING.
13. ALL CONSTRUCTION SIGNS SHALL BE BLACK LEGEND ON A REFLECTORIZED ORANGE BACKGROUND UNLESS OTHERWISE NOTED.
14. ALL SIGNS, INCLUDING EXISTING, THAT ARE NOT REPRESENTATIVE OF ACTUAL WORK CONDITIONS SHALL BE EITHER COVERED OR REMOVED WHEN NOT APPLICABLE.

CHANNELIZATION

15. THE MAXIMUM SPACING BETWEEN CHANNELIZATION DEVICES (DRUMS OR CONES) SHALL BE APPROXIMATELY EQUAL IN FEET TO THE POSTED SPEED LIMIT. THE MINIMUM SPACING SHALL BE 20' O.C.
16. REFLECTORIZED CONES SHALL BE MINIMUM 28" HIGH, 36" CONES ARE RECOMMENDED.
17. FLASHING OR STEADY BURN WARNING LIGHTS CAN BE USED ON DRUMS, BARRICADES, JERSEY BARRIERS OR WHERE DIRECTED BY THE ENGINEER.
18. METAL DRUMS ARE PROHIBITED AS CHANNELIZATION DEVICES.
19. PLASTIC DRUMS WITH SOME FORM OF LIGHTING DEVICE MOUNTED ON THEM MUST PASS THE CRITERIA SET FORTH IN NCHRP 350 "RECOMMENDED PROCEDURES FOR THE SAFETY PERFORMANCE EVALUATION OF HIGHWAY FEATURES." IF THEY DO NOT MEET THIS CRITERIA, THEY MUST BE REMOVED FROM THE PROJECT.

MINIMUM NUMBER OF CHANNELIZING DEVICES NEEDED						
TAPER LENGTH (ft)	35 MPH		45 MPH		55 MPH	
	BUFFER AREA	WORK AREA	BUFFER AREA	WORK AREA	BUFFER AREA	WORK AREA
100	5	3	5	3	5	3
150	6	3	6	3	6	3
200	7	4	7	4	7	4
250	9	5	9	5	9	5
300	10	5	10	5	10	5
350	11	6	11	6	11	6
400	13	7	13	7	13	7
450	14	7	14	7	14	7
500	16	8	16	8	16	8
550	17	8	17	8	17	8
600	19	10	19	10	19	10
650	20	10	20	10	20	10

NOTE: MINIMUM SPACING OF DRUMS MAY VARY AND SHALL BE DETERMINED IN THE FIELD.

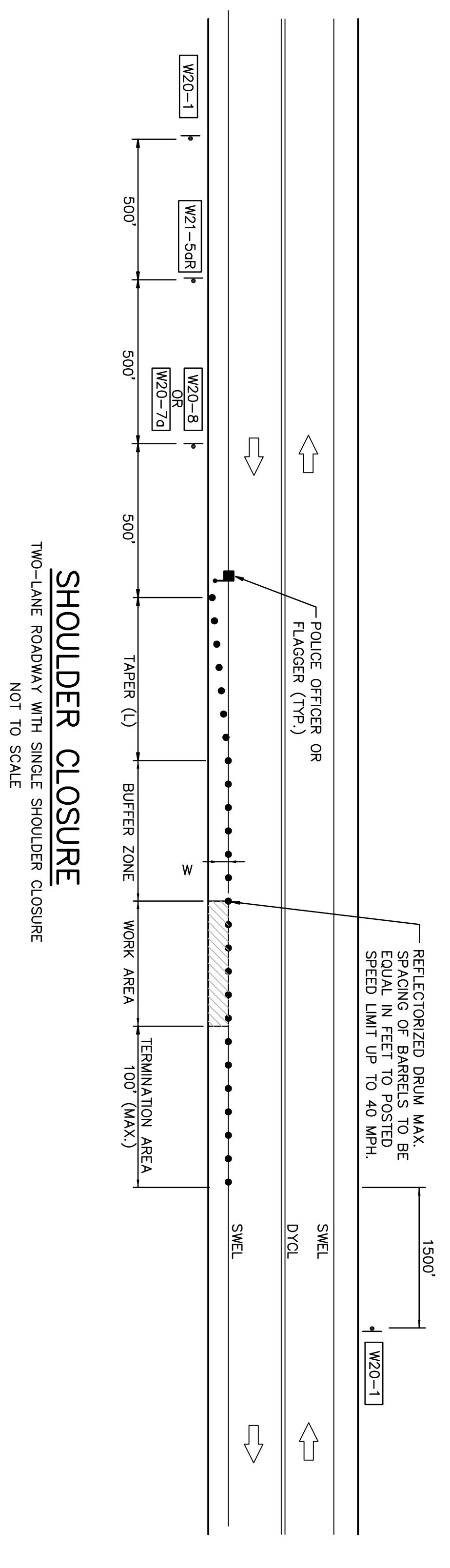
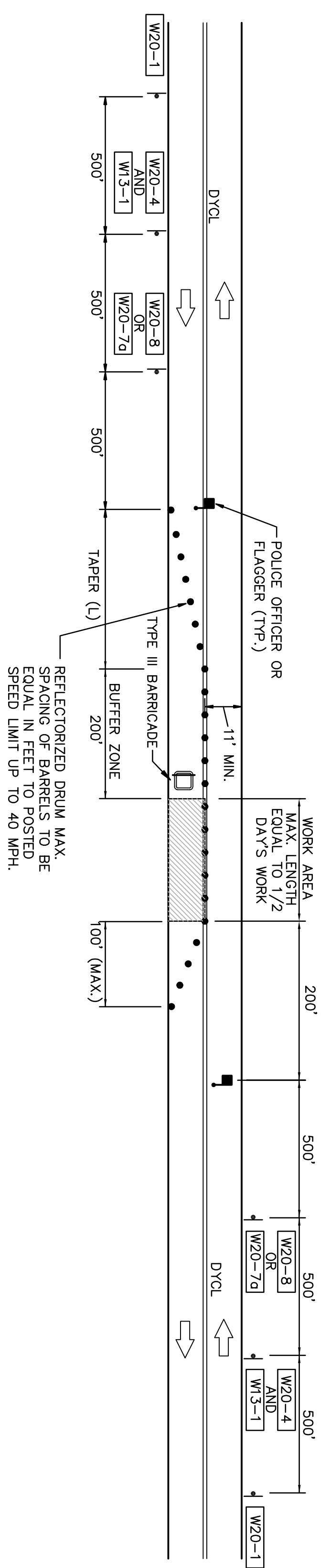
TRAFFIC MANAGEMENT LEGEND

- WORK AREA
- DIRECTION OF TRAVEL
- REFLECTORIZED DRUM (OR CONE)
- REFLECTORIZED DRUM WITH TYPE 'X' FLASHING MARKING LIGHT
- POLICE OFFICER/FLAGGER CONTROL
- PORTABLE TYPE III BARRICADE (4' WIDE, MIN.)
- REMOVABLE JERSEY BARRIER
- FLASHING ARROW BOARD (30" x 60" STD. SIZE WITH 15 LAMPS, MIN.)
- VARIABLE MESSAGE SIGN
- PAVEMENT MARKINGS TO COVER OR REMOVE

GUIDELINE FOR LENGTH OF BUFFER SPACE

SPEED* (MPH)	LENGTH (FEET)
20	35
25	55
30	85
35	120
40	170
45	220
50	280
55	335
60	415
65	485

* POSTED SPEED, OFF-PEAK 85% PERCENTILE SPEED PRIOR TO WORK STARTING, OR THE ANTICIPATED OPERATING SPEED IN MPH



SIGN LEGEND

- W13-1 (24" x 30")
- W20-1 (36" x 36")
- W20-4 (36" x 36")
- W20-7d (36" x 36")
- W20-8 (36" x 36")
- W21-5dR (30" x 30")

TRAFFIC MANAGEMENT PLAN
TRURO CENTRAL SCHOOL
G.A.R. HIGHWAY (ROUTE 6)
TRURO, MASSACHUSETTS

PROJECT: **SCHOOL ZONE FLASHERS INSTALLATION PROJECT**
TRURO, MASSACHUSETTS

PREPARED FOR: **CAPE COD COMMISSION**
3225 MAIN STREET
BARNSTABLE, MA 02630

GPI Greenman-Pedersen, Inc.
Engineers, Architects, Planners, Construction Engineers & Inspectors

800 South Main Street, Mansfield, MA 02048 Tel: (508) 339-9350
61 Spit Brook Road, Suite 110, Nashua, NH 03060 Tel: (603) 891-2213
105 Central Street, Suite 4100, Stoneham, MA 02980 Tel: (781) 279-5500
Other Offices In: FL, MD, MI, NJ, NY, OH, PA, VA, VT, WA
<http://www.gpinet.com>

NO.	REVISION	DATE	DESIGN/DRWING BY	TITLE
D	TMP COMMENTS	5/06/10	JRN	
		01/22/10		

JOB NO: 09555
FILE NAME: 05999_Bldg
DRAWING NO: **2** OF 2

