

FIRE ALARM SYSTEM RISER DIAGRAM

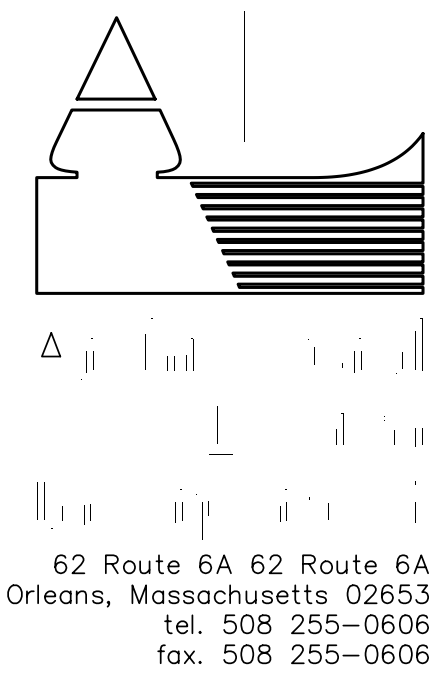
NOTES TO FIRE ALARM SYSTEM

- ALL SYSTEM COMPONENTS SHALL BE OF ONE MANUFACTURER.
- ALL EQUIPMENT SHALL BE LISTED BY UNDERWRITERS' LABORATORIES, INCORPORATED AND SHALL MEET WITH THE APPROVAL OF THE STATE FIRE MARSHAL AND THE SUPERINTENDENT OF FIRE ALARM, AND THE LOCAL FIRE DEPARTMENT.
- ALL WIRING SHALL BE SIZED, COLOR CODED AND INSTALLED PER MANUFACTURER'S RECOMMENDATIONS.
- ELECTRICAL CONTRACTOR SHALL OBTAIN WRITTEN APPROVAL OF THE LOCAL FIRE DEPARTMENT BEFORE PURCHASING FIRE ALARM EQUIPMENT.
- THE ELECTRICAL CONTRACTOR SHALL PROVIDE THE FIRE DEPARTMENT WITH ALL NECESSARY DATA THEY REQUIRE FOR APPROVAL.
- THE ELECTRICAL CONTRACTOR IS RESPONSIBLE FOR FURNISHING AND INSTALLING THE FIRE ALARM SYSTEM ACCORDING TO THE RULES AND REGULATIONS OF THE LOCAL FIRE DEPARTMENT, THE STATE OF MASSACHUSETTS AND NFPA CODES.
- UNDER NO CIRCUMSTANCES SHALL THE TOP OF ANY MANUAL PULL STATION BE INSTALLED HIGHER THAN 48" AFF.
- THE ELECTRICAL CONTRACTOR SHALL FURNISH AND INSTALL ALL EQUIPMENT AND WIRING AS REQUIRED FOR A COMPLETE AND OPERATIONAL FIRE ALARM SYSTEM AS DESCRIBED AND SHOWN ON THE DRAWINGS.
- ALL STROBE LIGHTS SHALL BE SYNCHRONIZED, MEET THE A.D.A. (AMERICANS WITH DISABILITIES ACT) AND NFPA 72 REQUIREMENTS.
- ALL HORN/STROBE LIGHTS AND STROBE LIGHTS SHALL BE INSTALLED IN THE EXACT LOCATIONS SHOWN ON THE DRAWINGS. WHERE THE ELECTRICAL CONTRACTOR DETERMINES IN THE FIELD THAT THE DEVICE OR DEVICES CANNOT BE INSTALLED IN THE EXACT LOCATION(S) SHOWN ON THE DRAWINGS, THEN AN ALTERNATE LOCATION(S) SHALL BE PROPOSED BY THIS CONTRACTOR FOR REVIEW BY THE ENGINEER AND SHALL BE DONE PRIOR TO THE START OF ANY ROUGH-IN.
- LOCATIONS SHOWN FOR HORN/STROBE LIGHTS AND STROBE LIGHTS WERE DESIGNED IN ACCORDANCE WITH THE 2007 NFPA 72 CHAPTER 7.
- THE CONTRACTOR SHALL PROVIDE ALL REQUIRED POWER SUPPLIES, APPURTENANCES, FINAL CONNECTIONS, TESTING AND WORK REQUIRED. PAY ALL COSTS ARISING THERE FROM, FOR A COMPLETE AND OPERATIONAL SYSTEM.
- "TEE" TAPPING OF ANY FA CIRCUIT WILL NOT BE ALLOWED.
- SMOKE AND HEAT DETECTORS SHALL NOT BE LOCATED WITHIN 3'-0" OF ANY SUPPLY AIR REGISTERS.
- FURNISH AND INSTALL DUCT TYPE SMOKE DETECTOR IN THE SUPPLY DUCT OF EACH HVAC UNIT RATED 2,000 CFM AND ABOVE. ELECTRICAL CONTRACTOR SHALL CONNECT TO NEW FIRE ALARM SYSTEM AND FURNISH AND INSTALL A REMOTE LED TEST/ALARM INDICATING DEVICE FOR ALL HVAC DUCT DETECTORS. LOCATE TEST STATIONS IN ACCORDANCE WITH THE LOCAL FIRE DEPARTMENT RULES AND REGULATIONS.
- PROVIDE RED FIRE ALARM CONDUIT AND BOXES.
- SEE SPECIFICATIONS.

FIRE ALARM LEGEND		
SYMBOL	DESCRIPTION	MOUNT. HEIGHT
FACP	INTELLIGENT ADDRESSABLE FIRE ALARM CONTROL PANEL (NOTIFIER #AFP-200)	6' TO TOP
DC	DIGITAL COMMUNICATOR	48"
K	KNOX BOX MODEL 3200	48"
ST	24 VDC EXTERIOR STROBE (WHEELLOCK #DC-MAX-R)	96"
F	ADDRESSABLE SINGLE ACTION MANUAL PULL STATION (NOTIFIER #NBGXXX)	48" AFF
S	ADDRESSABLE SMOKE DETECTOR (NOTIFIER #FSP-851 WITH #B710LP BASE)	-
SD	ADDRESSABLE DUCT SMOKE DETECTOR (NOTIFIER #FSD-751RPL WITH ST-3 SAMPLING TUBE)	-
200'	ADDRESSABLE FIXED TEMPERATURE HEAT DETECTOR (NOTIFIER #FST-851H WITH #B710LP BASE)	-
E475	FIRE ALARM COMBINATION HORN/SYNCHRONOUS & MULTI-TAP, ADA APPROVED STROBE LIGHT. NUMERAL DENOTES CANDELLA RATING IF OTHER THAN 15 CANDELA.	†
L475	FIRE ALARM SYNCHRONOUS & MULTI-TAP, ADA APPROVED STROBE LIGHT. NUMERAL DENOTES CANDELLA RATING IF OTHER THAN 15.	†
MM	ADDRESSABLE MONITOR MODULE (NOTIFIER #FMM-1)	-
RM	ADDRESSABLE RELAY MODULE (NOTIFIER #FRM-1)	-
CM	ADDRESSABLE CONTROL MODULE (NOTIFIER #FCM-1)	-
RTS	REMOTE TEST STATION - LOCATE IN ELECTRIC ROOM (NOTIFIER #RTS-451)	-
RI	REMOTE INDICATOR (NOTIFIER #RA400Z)	OVER DOOR
*TS	SPRINKLER SYSTEM WATER FLOW SWITCH	-
*TS	SPRINKLER SYSTEM TAMPER SWITCH	-
*PS	SPRINKLER SYSTEM PRESSURE SWITCH	-
EO	END-OF-LINE-DEVICE	-
---	TICKS DENOTES NUMBER OF #14 FPLR FIRE ALARM RATED CONDUCTORS	-

* DEVICE TO BE FURNISHED AND INSTALLED BY OTHERS BUT WIRED BY THE E.C.

† AUDIO AND VISUAL ALARM DEVICES SHALL BE MOUNTED 80" ABOVE FINISHED FLOOR OR 6" BELOW FINISHED CEILING, WHICHEVER IS LOWER.



BARNSTABLE HEALTH FACILITY FIRE ALARM SYSTEM

M.J. SUPRANOVICZ ASSOCIATES
CONSULTING ELECTRICAL ENGINEERS
29 DIANDY ROAD
GAGANUW BEACH
MA 02562
T: 508/933-7559
C: 978/935-0799
E-MAIL: MJSAAE@AOL.COM

Date: Revision:

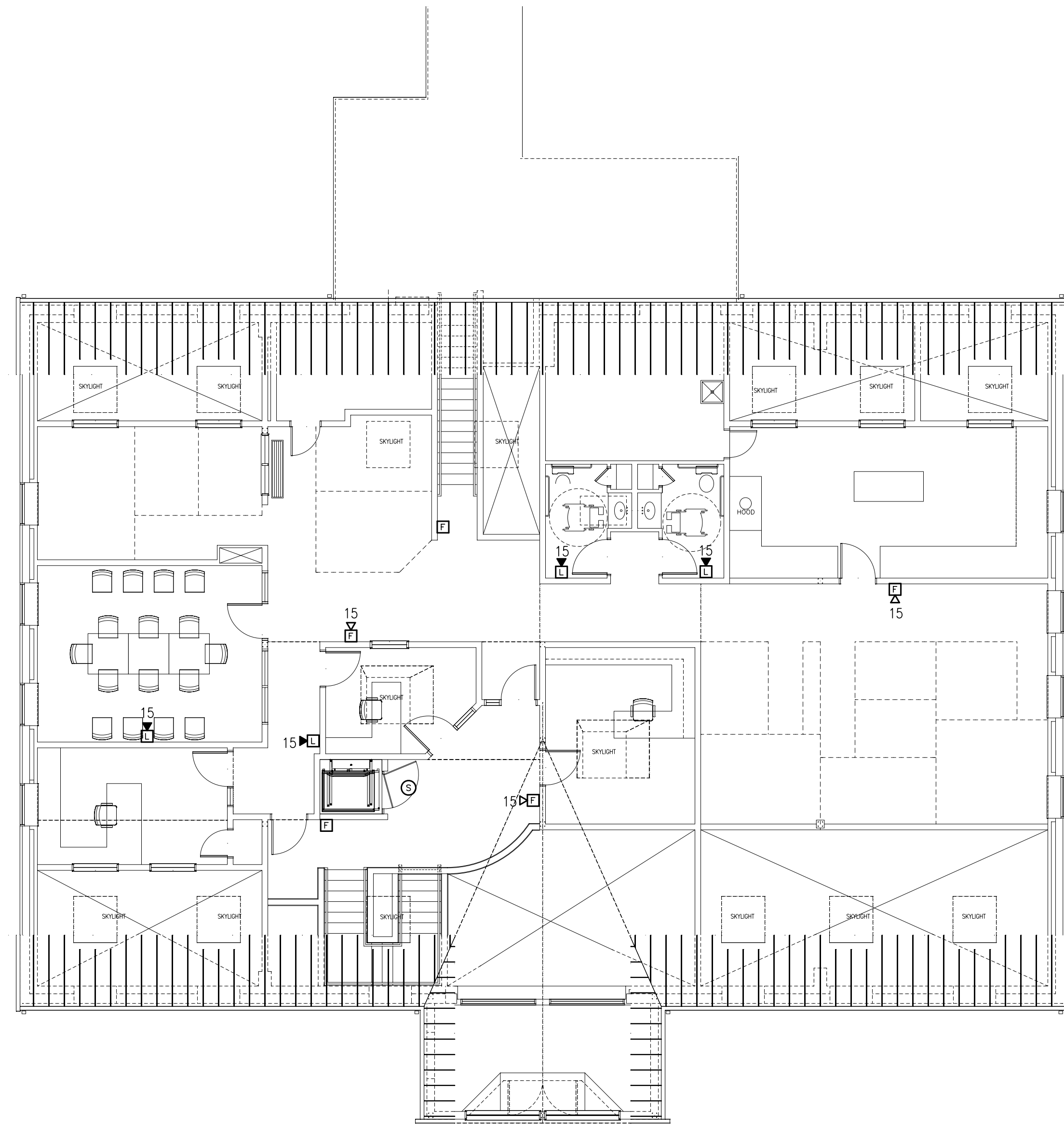
© Architectural Design Incorporated 2011

LEGEND, SCHEDULE, AND FIRE ALARM RISER DIAGRAM

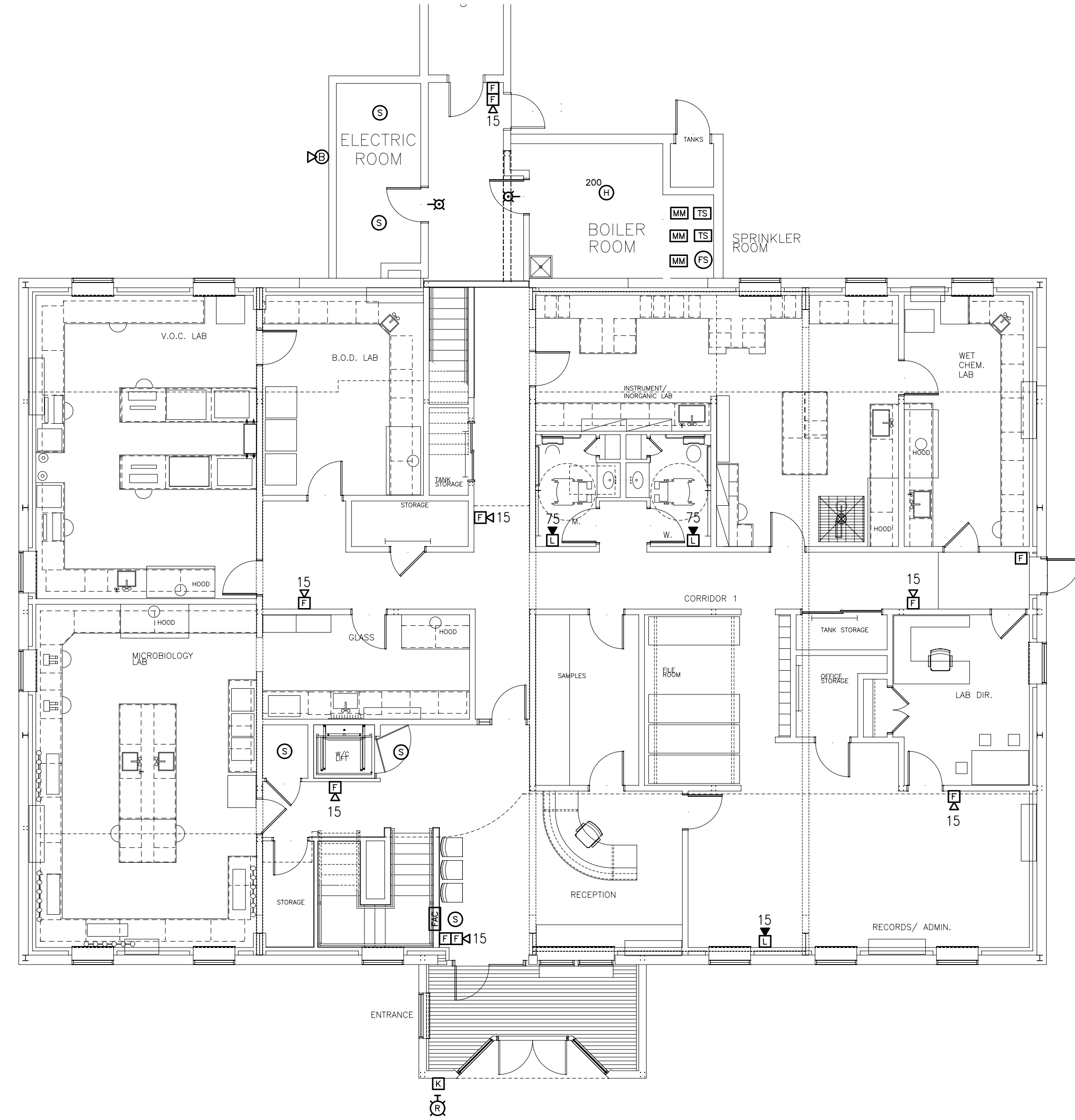
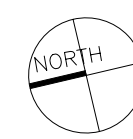
Date: 23 JULY 2012
Project: 12-07
Scale: AS NOTED
Drawn: MJS

FA.1

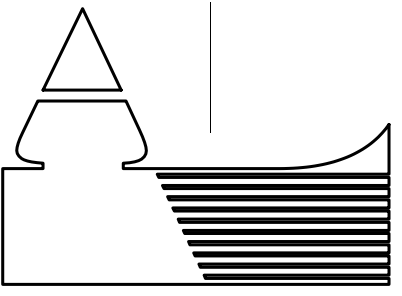
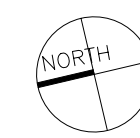
CONSTRUCTION SET BID PACKAGE 7/31/2012



**SECOND FLOOR FIRE ALARM
SYSTEM PLAN**
SCALE: 1/8"=1'-0"



**FIRST FLOOR FIRE ALARM
SYSTEM PLAN**
SCALE: 1/8"=1'-0"



62 Route 6A 62 Route 6A
Orleans, Massachusetts 02653
tel. 508 255-0606
fax. 508 255-0606

**BARNSTABLE
HEALTH FACILITY**

M.J. SUPRANOVIC ASSOCIATES
CONSULTING ELECTRICAL ENGINEERS
29 DIANDY ROAD
SAGAMORE BEACH
MA 02562
E-MAIL: MJSAAE@AOL.COM

Date: Revision:

© Architectural Design Incorporated 2011

**FIRE ALARM
SYSTEM PLANS**

Date: 23 JULY 2012
Project: 12-07
Scale: AS NOTED
Drawn: MS

FA.2

CONSTRUCTION SET BID PACKAGE 7/31/2012