



Architectural Design Incorporated

62 Route 6A  
Orleans, Massachusetts 02653  
tel. 508 255-0606  
fax. 508 255-0606

# BARNSTABLE HEALTH FACILITY

COASTAL ENGINEERING COMPANY, INC.  
260 Cranberry Hwy., Orleans, MA 02653  
508.255.6511 Fax: 508.255.6700

Date: Revision:

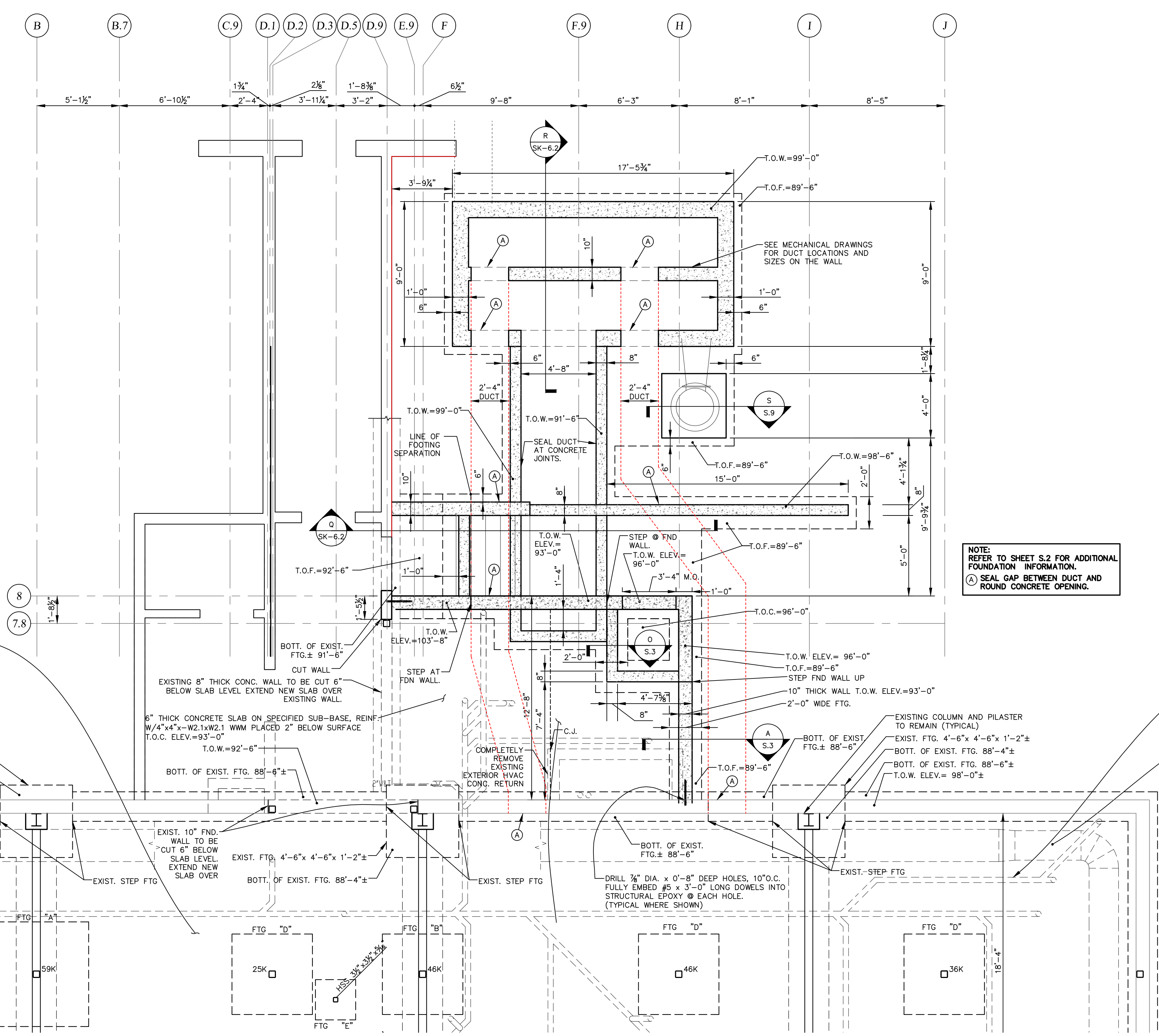
© Architectural Design Incorporated 2011

## PARTIAL FOUNDATION HVAC PLAN

Date: 11/04/09  
Project: C16728.03  
Drawn by: APC  
Designed by: DAM  
Checked by: JAB  
Scale: AS NOTED

# SK-6.1

CONSTRUCTION SET 04/15/11



NOTE:  
REFER TO SHEET S.2 FOR ADDITIONAL FOUNDATION INFORMATION.  
A SEAL GAP BETWEEN DUCT AND ROUND CONCRETE OPENING.

EXISTING 4" THICK CONCRETE SLAB TO BE SAWCUT TO ALLOW PLACEMENT OF ALL PLUMBING LINES. REFER TO CONTRACT PLUMBING DWGS. PIPING DEPTH SHALL BE LOCATED @ ELEV. 88'-0"± UNDER EXISTING DUCTS. PATCH SLABS AS SPECIFIED.

EXIST. FTG. 4'-6" x 4'-6" x 1'-2"±  
BOTT. OF EXIST. FTG. 88'-4"±  
BOTT. OF EXIST. FTG. 88'-6"±

EXISTING 28" DIA. DUCT UNDER SLAB TO REMAIN-DO NOT DAMAGE. BOTTOM OF DUCT APPROX. ELEV.=88'-6"±

BOTT. OF EXIST. FTG. 89'-0"±

EXIST. STEP FTG

EXIST. 10" FND. WALL TO BE CUT 6" BELOW SLAB LEVEL. EXTEND NEW SLAB OVER

EXIST. FTG. 4'-6" x 4'-6" x 1'-2"±  
BOTT. OF EXIST. FTG. 88'-4"±

EXIST. STEP FTG

REFER TO TYPICAL WALL INFILL DWG. ON SHEET S.7

EXISTING 8" THICK CONC. WALL TO BE CUT 6" BELOW SLAB LEVEL. EXTEND NEW SLAB OVER EXISTING WALL.

8" THICK CONCRETE SLAB ON SPECIFIED SUB-BASE, REINF. W/4"x4"x-W2.1/W2.1 W/M PLACED 2" BELOW SURFACE T.O.C. ELEV.=93'-0"

T.O.W.=92'-6"  
BOTT. OF EXIST. FTG. 88'-6"±

EXIST. 10" FND. WALL TO BE CUT 6" BELOW SLAB LEVEL. EXTEND NEW SLAB OVER

EXIST. FTG. 4'-6" x 4'-6" x 1'-2"±  
BOTT. OF EXIST. FTG. 88'-4"±

EXIST. STEP FTG

EXIST. STEP FTG

EXIST. STEP FTG

EXIST. STEP FTG

EXIST. STEP FTG

EXIST. STEP FTG

EXIST. STEP FTG

EXIST. STEP FTG

EXIST. STEP FTG

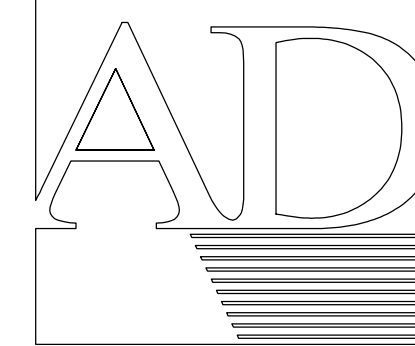
EXIST. STEP FTG

EXIST. STEP FTG

EXIST. STEP FTG

PARTIAL FOUNDATION PLAN - AC-1, STAIRS AND BOILER ROOM

SCALE: 1/4"=1'-0"



Architectural  
Design  
Incorporated

62 Route 6A  
Orleans, Massachusetts 02653  
tel. 508 255-0606  
fax. 508 255-0606

**BARNSTABLE  
HEALTH FACILITY**

**COASTAL  
ENGINEERING  
COMPANY, INC.**  
260 Cranberry Hwy., Orleans, MA 02653  
508.255.6511 Fax: 508.255.6700

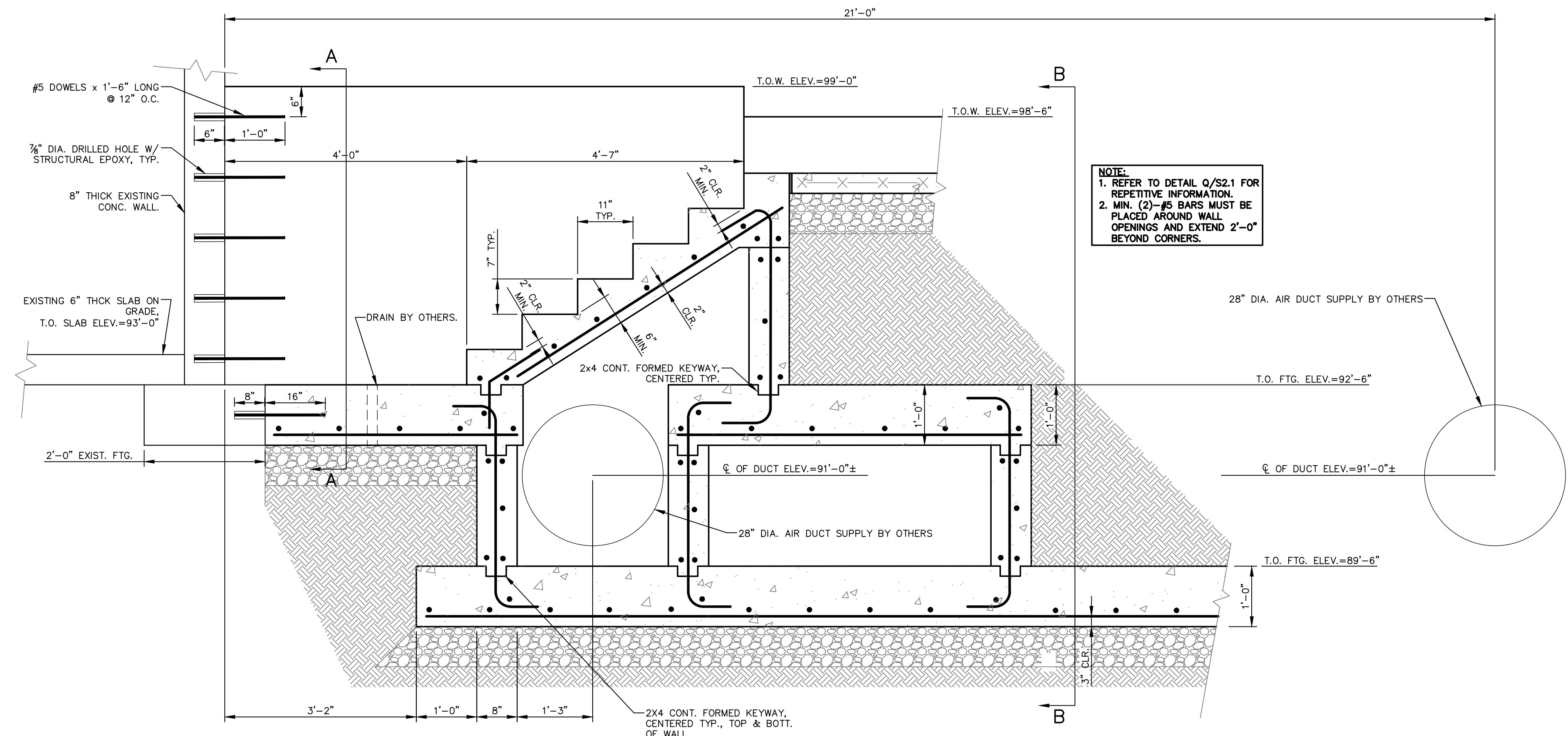
Date: Revision:

©Architectural Design Incorporated 2011

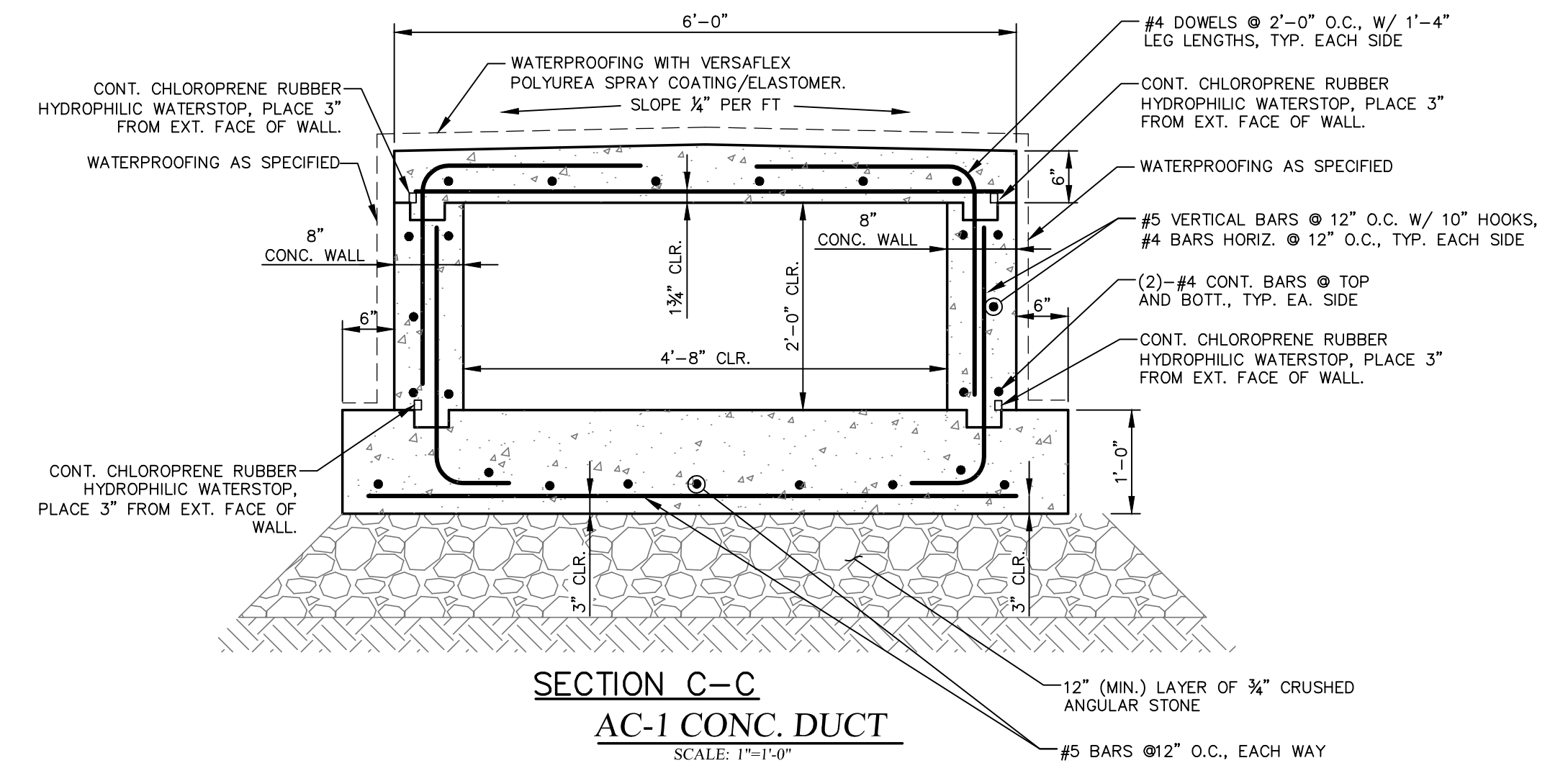
**FOUNDATION  
DETAILS**

Date: 11/04/09  
Project: C16728.03  
Drawn by: APC  
Designed by: DAM  
Checked by: JAB  
Scale: AS NOTED

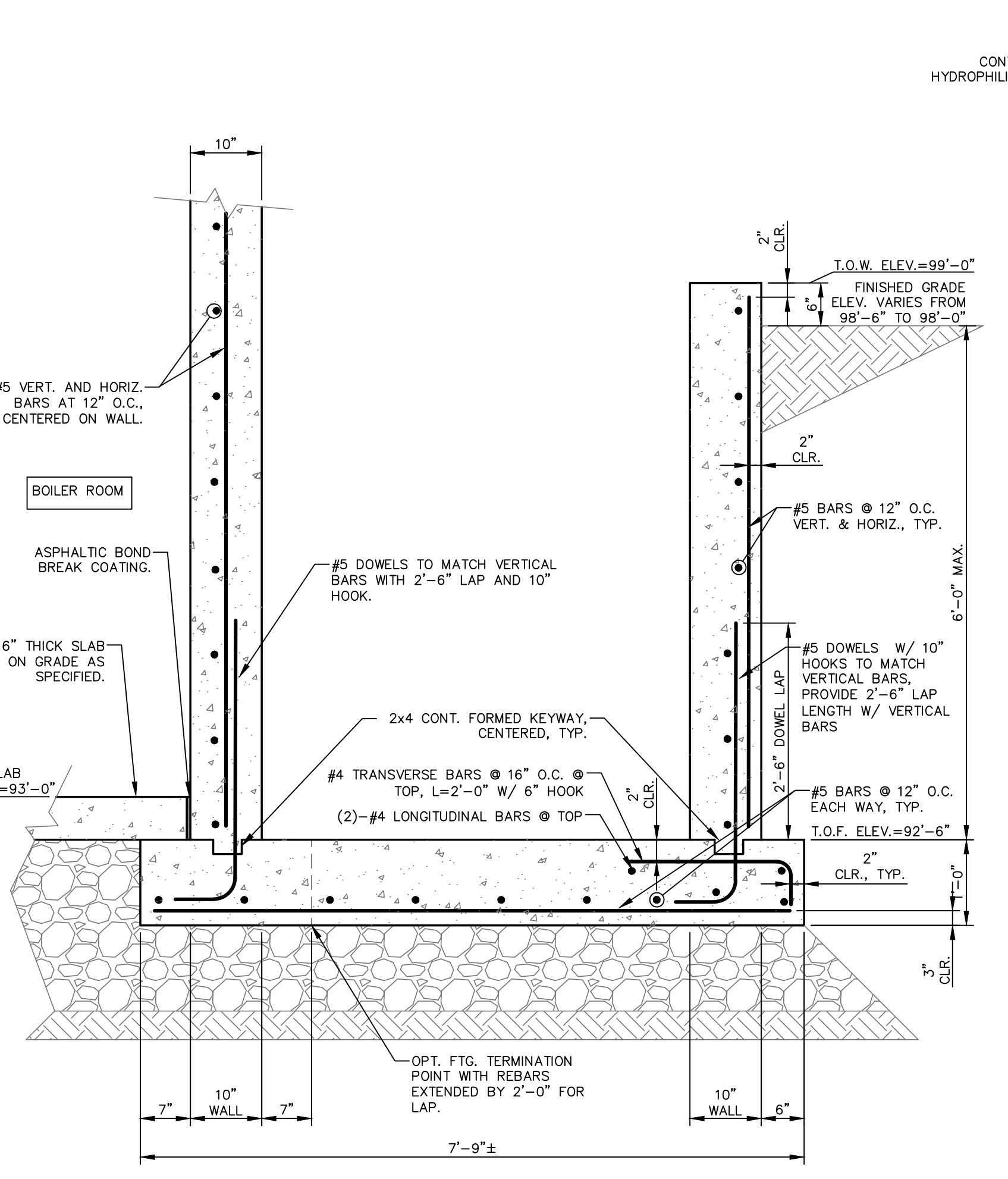
**SK-6.2**



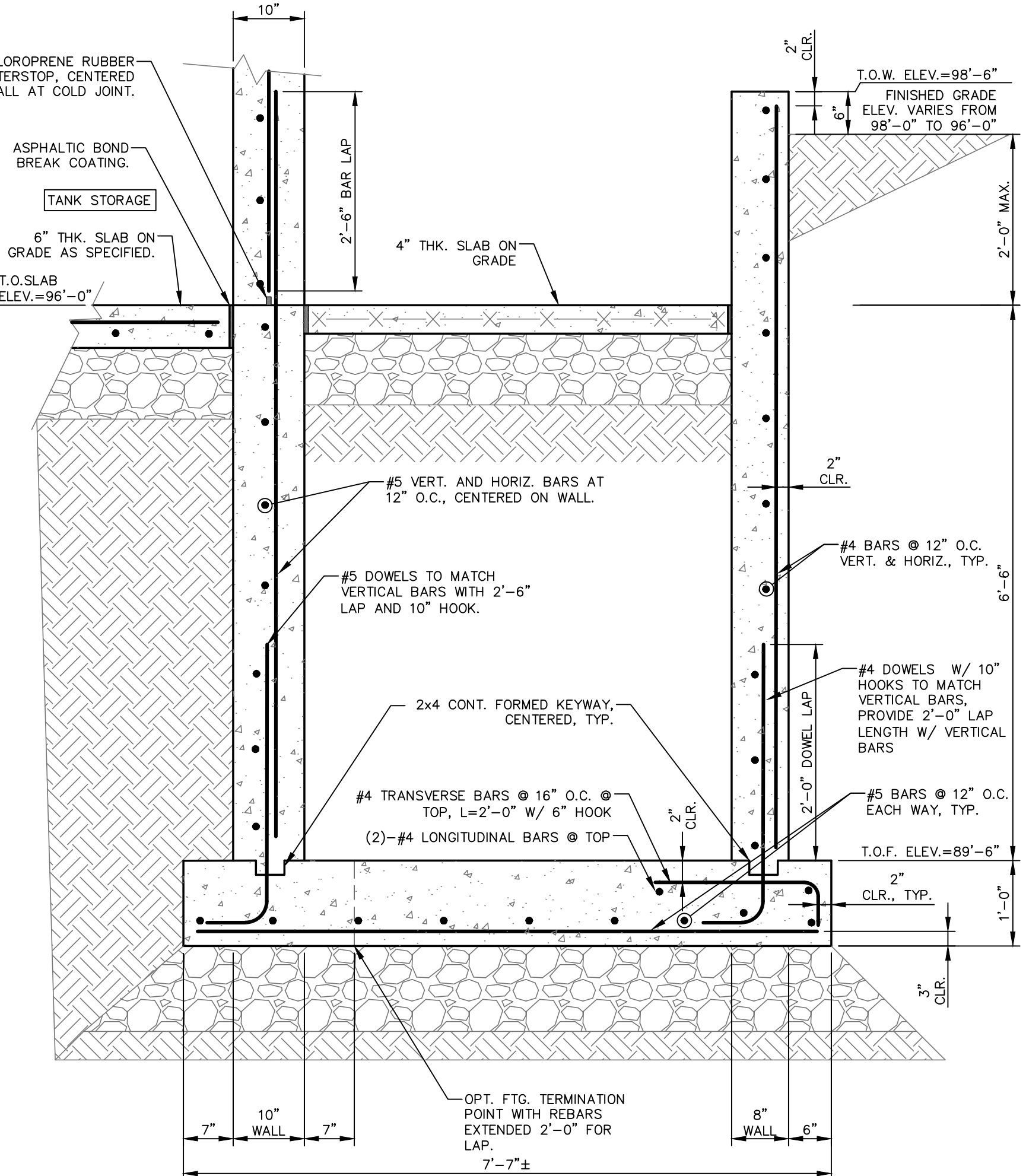
**SECTION @ STAIR EAST OF BOILER ROOM**  
SCALE: 3/4"=1'-0"



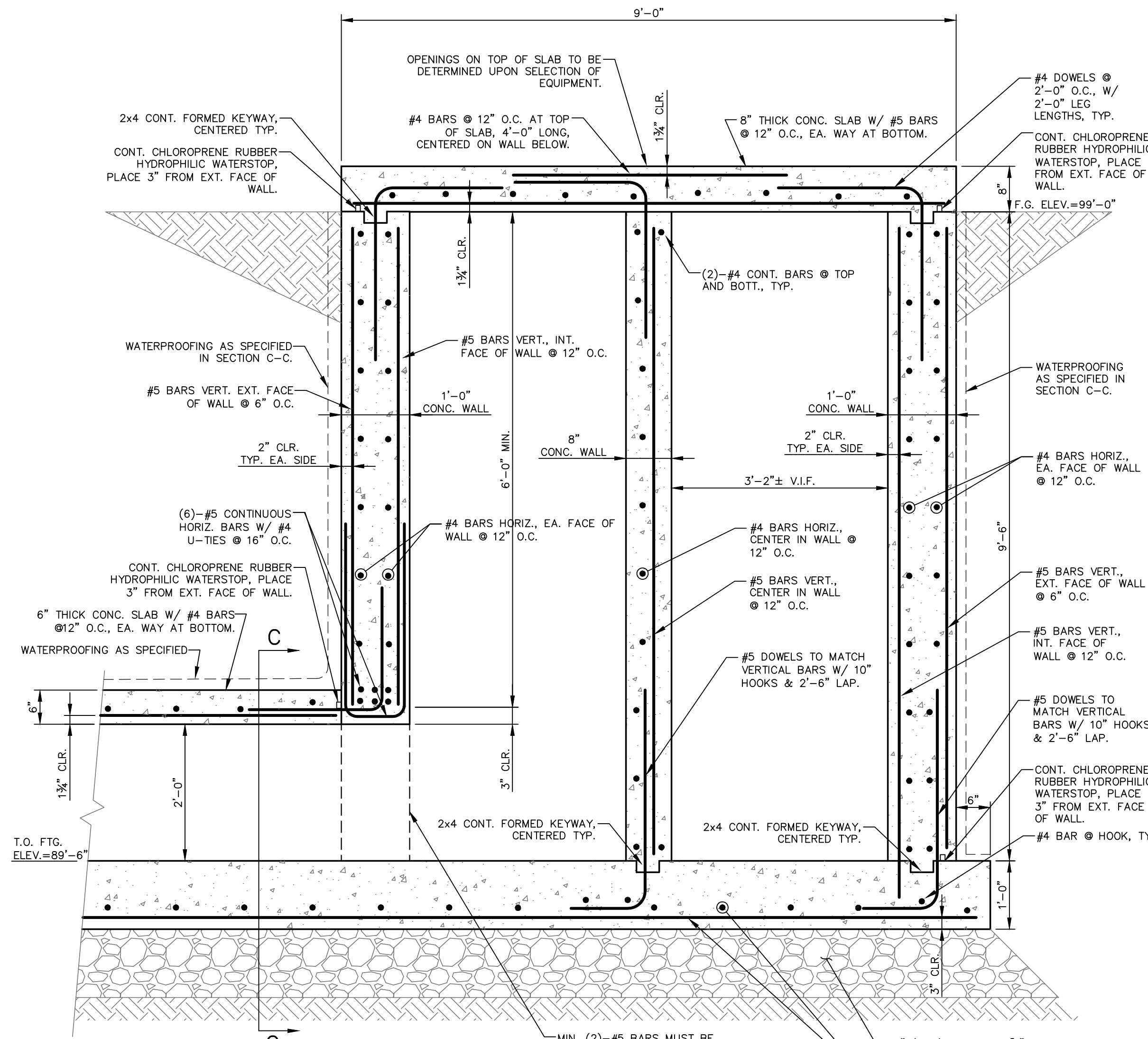
**SECTION C-C  
AC-1 CONC. DUCT**  
SCALE: 1"=1'-0"



**SECTION A-A  
RETAINING WALL @ LOWER LANDING**  
SCALE: 3/4"=1'-0"



**SECTION B-B  
RETAINING WALL @ RAMP**  
SCALE: 3/4"=1'-0"



**SECTION @ AC-1 SUPPORT STRUCTURE**  
SCALE: 3/4"=1'-0"

CONSTRUCTION SET 04/15/11